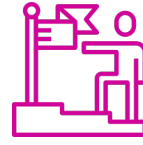


# PRE-KINDERGARTEN

At Northside Early Learning Center  
Applications available March 1, 2020



Applications available online at [www.ChurchillCSD.com](http://www.ChurchillCSD.com)  
Or at Northside Early Learning Center, 340 Venturacci Ln. (775) 423-3463

Accepting Applications  
Starting March 1st at Northside Early Learning Center

Incoming students must turn 3 years old (3 year old program) or 4 years old (4 year old program) by September 30, 2020 and not be age-eligible for kindergarten.

Qualification requirements & application information available online at:

[www.ChurchillCSD.com](http://www.ChurchillCSD.com)  
Or at Northside Early Learning Center  
340 Venturacci Ln. 775-423-3463

**\*Student Admission to Pre-K at NELC Pending Application Approval\***

*Students that exceed the financial requirements will be placed on a waitlist.*

Las solicitudes se aceptarán a partir del 1 de marzo en el Northside Early Learning Center

Los estudiantes que ingresan deben cumplir 3 años (programa de 3 años) o 4 años (programa de 4 años) antes del 30 de septiembre de 2020 y no ser elegibles para la edad de kindergarten.

Requisitos de calificación información de la aplicación disponible en línea en:

[www.ChurchillCSD.com](http://www.ChurchillCSD.com)  
O Centro de Aprendizaje Temprano de Northside  
340 Venturacci Ln. 775-423-3463

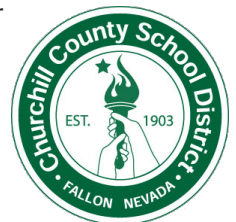
**\*Admisión de estudiantes a Pre-K en NELC Pendiente de aprobación de la solicitud\***

*Los estudiantes que excedan los requisitos financieros serán colocados en una lista de espera*

The number of Pre-K student seats available is dependent upon grant funding awarded in mid-June. Letters of acceptance into Pre-K will be sent in late June.

**\*\*Please Note\*\***

Free pre-kindergarten program, funded by Federal and State Grant funds, for qualified children and families up to the maximum funded capacity. Families are determined eligible for pre-kindergarten funding based on their verified family size, total annual gross income, and the maximum allowable income for eligibility. The maximum allowable income is determined by the Poverty Guideline, issued each January in the Federal Register by the Department of Health and Human Services, and is available online at [www.hhs.gov](http://www.hhs.gov).



**FOR QUESTIONS CONTACT: NORTHSIDE EARLY LEARNING CENTER**  
**CHURCHILLCSD.COM | 340 VENTURACCI LN. | FALLON, NV 89406 | 775-423-3463**